

Proposed portfolios: Summary

Children & young people

- Maternity, early years, school age, CYP mental health, Immunisations, oral health, ACE, childhood obesity services and contracting, child death overview panel

Health Behaviours - adults

- Substance misuse and sexual health (including licensing), young people sexual health and substance misuse, teenage pregnancy, domestic violence, homelessness, adults with complex needs, smoking

Physical activity and healthy weight

Physical activity, healthy weight, adult weight management contracting

Older adults and Long term conditions

- Healthcare public health, Core offer to CCGs, LTC (diabetes, cancer, CVD) – local and STP level, frailty, dementia, health protection, local strategic board, Camden neighbourhood development, Better Care Fund, strategic input into NHS health checks and LCS

Wider determinants and Mental Health

- Housing/regeneration, employment, transport, air quality, mental health and suicide prevention, social prescribing, social isolation, MECC, MHFA, workplace health, community champions, Islington localities

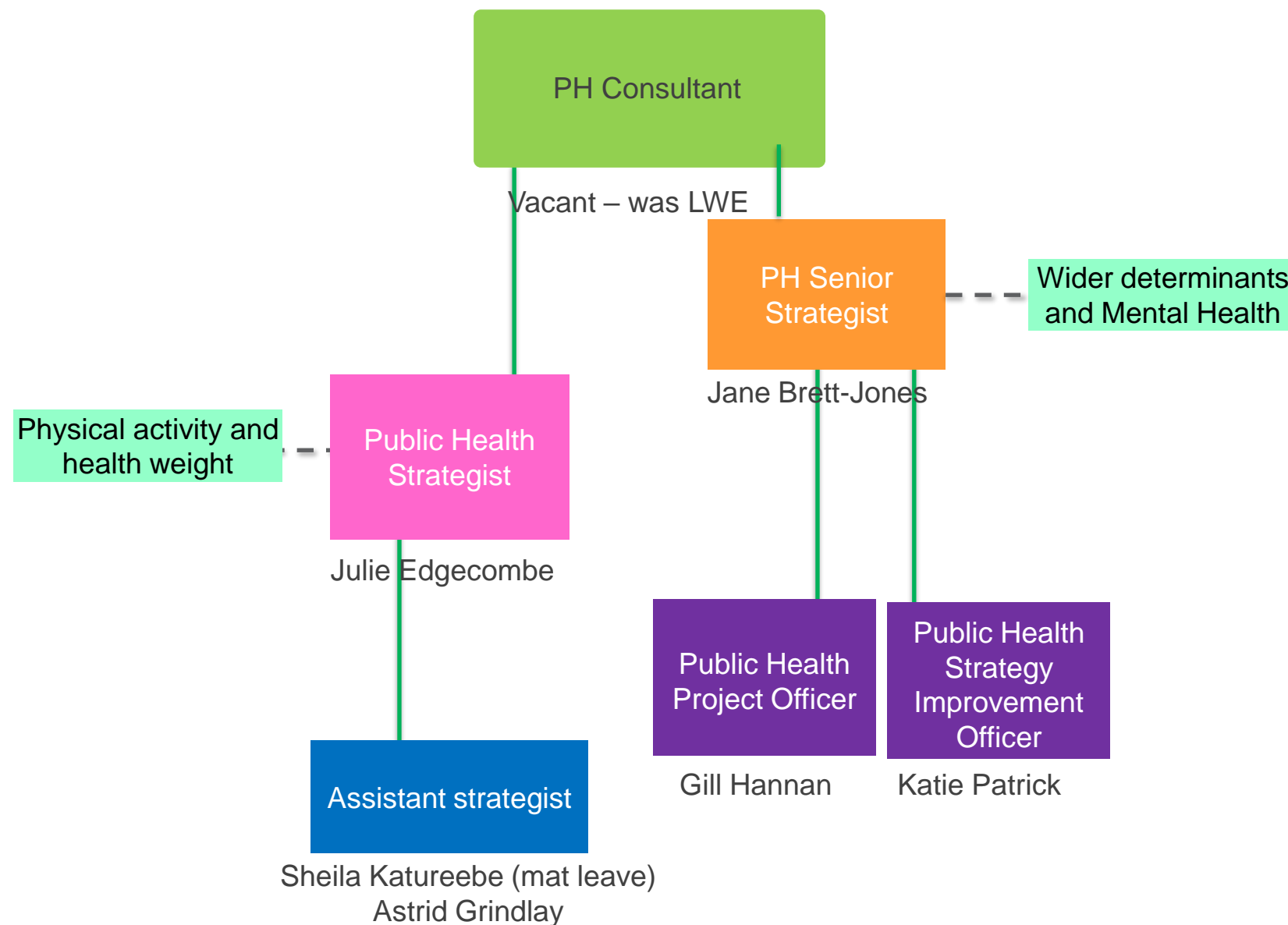
Commissioning, Governance and Business Support

- Departmental administration, contracts, commissioning, procurement, governance, finance, commissioning advice to other portfolios

Knowledge and Intelligence

- JSNA, PH data analytics, core offer, adult social care intelligence, housing intelligence, population health management, qualitative research and resident engagement

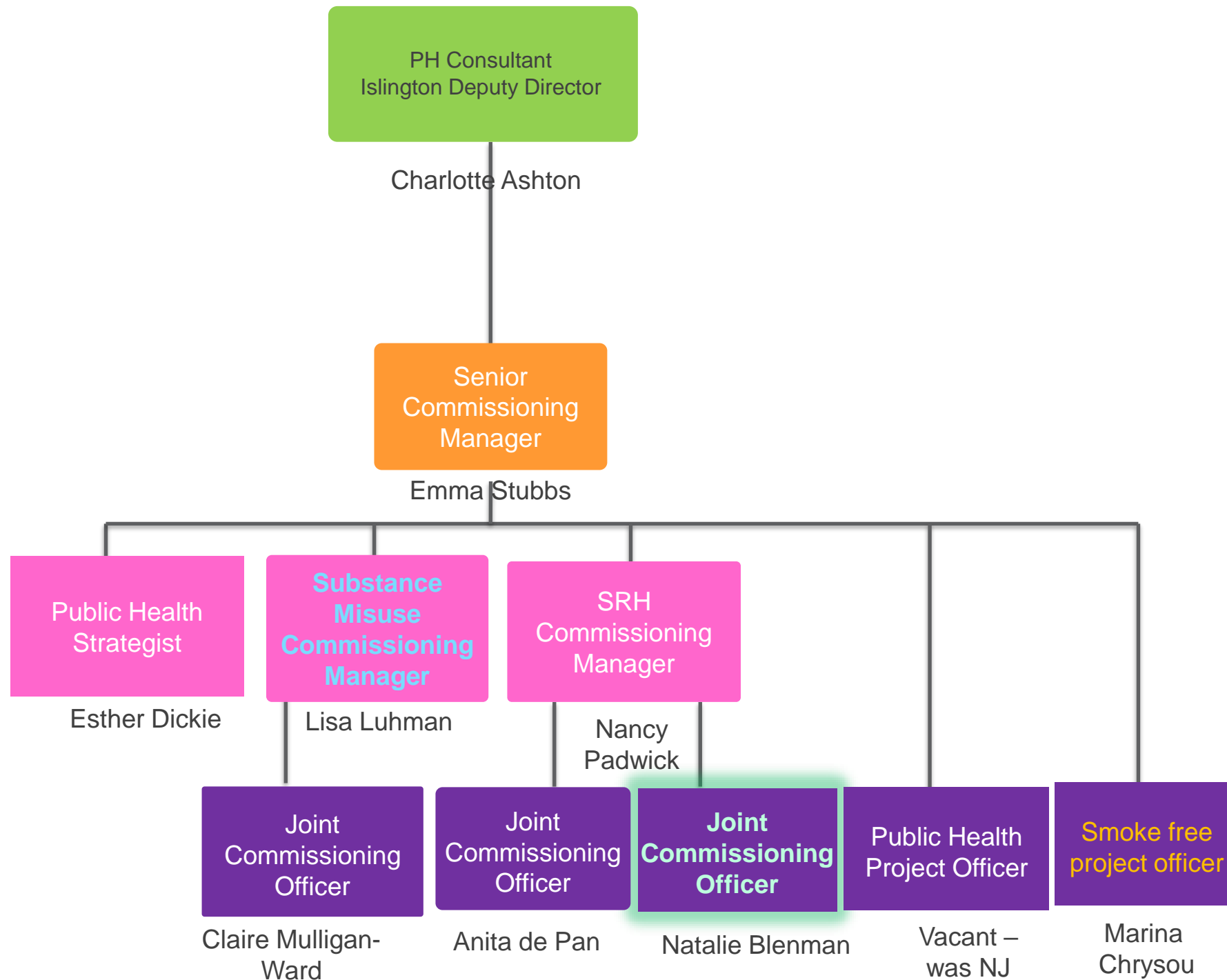
Children and young people



- Maternity
- Early years
- School age
- CYP mental health
- Immunisations
- Oral health
- Childhood obesity services
- Child Death Overview Panel
- Core offer
- Youth violence

Link KIT colleague: Evie Lodge

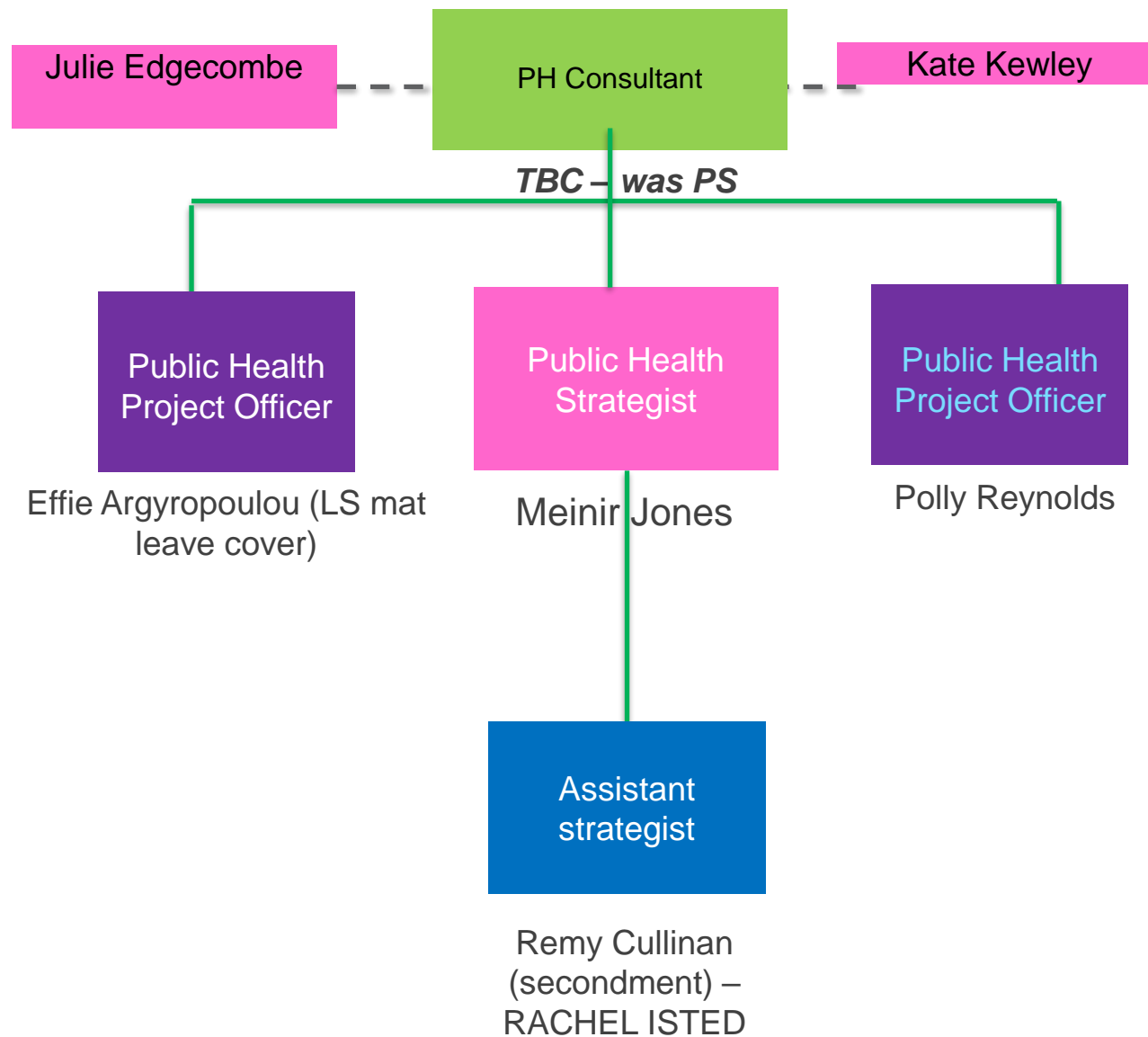
Healthy Behaviours - adults



- Substance misuse (inc licensing) (all age groups)
- Sexual health (all age groups)
- Teenage pregnancy
- Domestic violence
- Homelessness, and adults with complex needs
- Smoking

Link KIT colleague: Marta Bertran

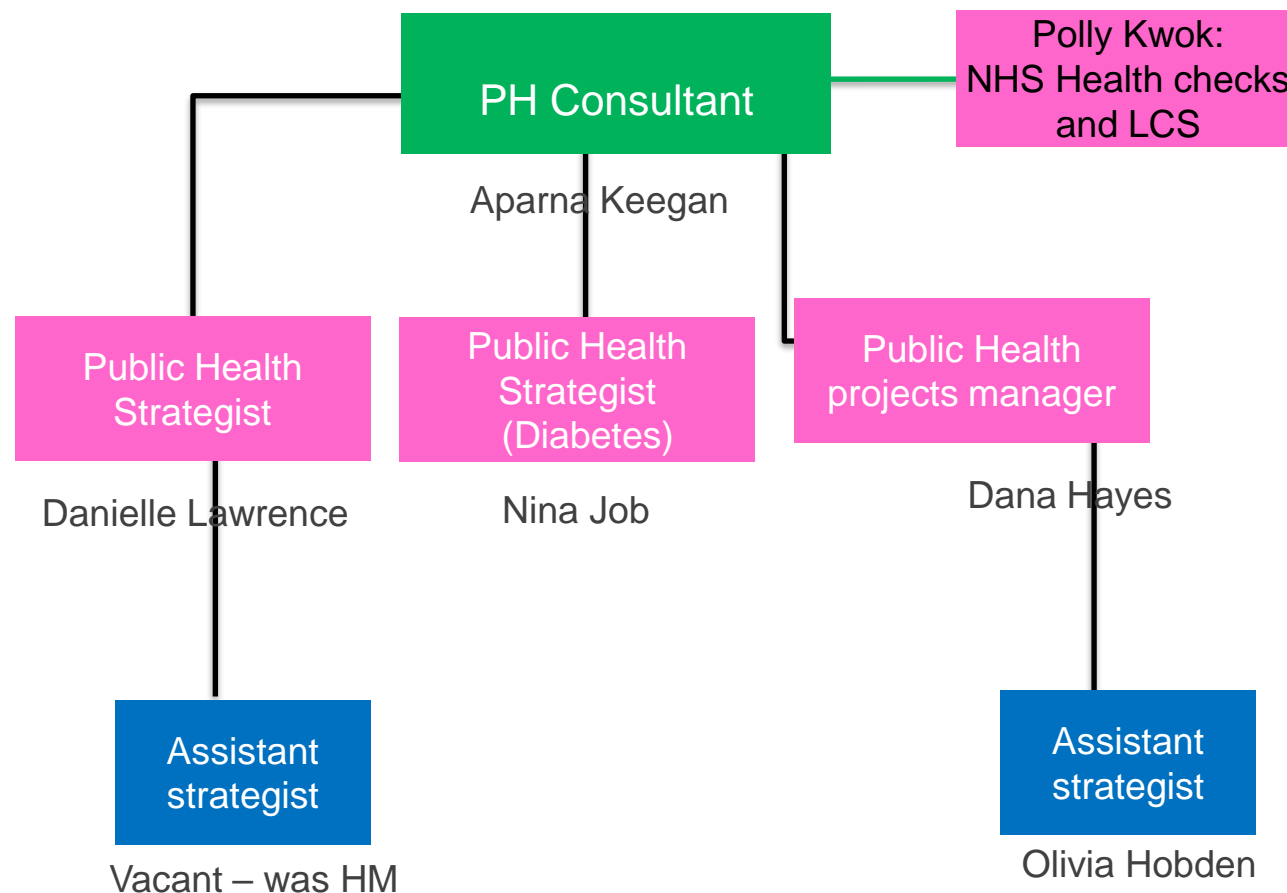
Physical activity and healthy weight



- Physical activity
- Healthy weight (including commissioned interventions/services for adults) – *to be covered by CGBS (slide 11) while this team formed*
- Camden CAN
- Somers Town Project
- Parks & green spaces
- Future Parks Accelerator
- Food policy and environment
- Food poverty
- Links to Superzones

Link KIT colleague: Alice Wynne

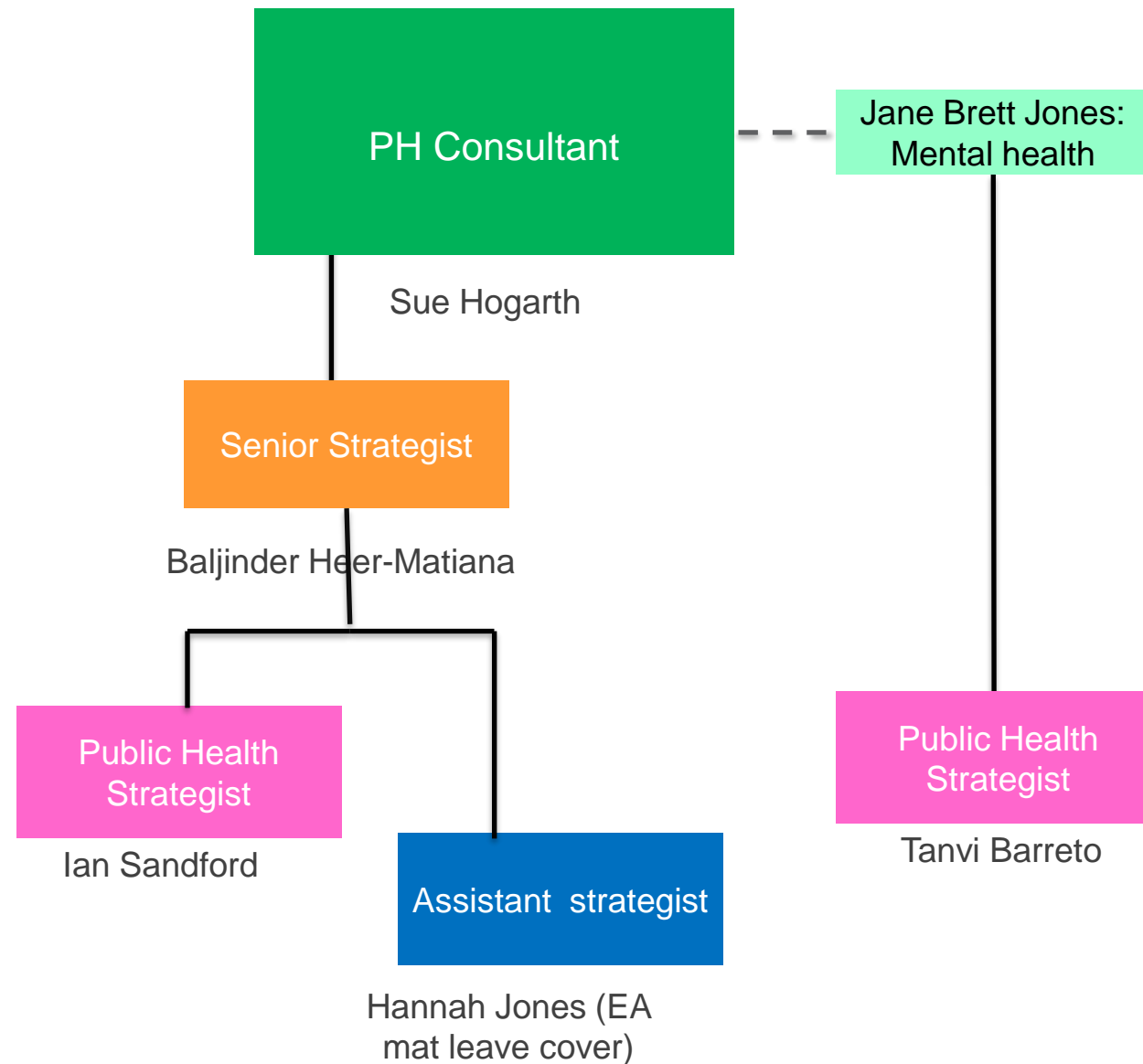
Older adults, LTC and communications



- Healthcare public health, Core offer to CCGs
- LTC (diabetes, cancer, CVD)/STP and local level
- Frailty
- Dementia
- Health protection
- Older adults wellbeing (inc falls and frailty)
- Link with ASC in Camden/Islington
- Camden neighbourhood development
- Better care fund
- Local care delivery board
- Strategic input into NHS health checks & relevant LCS
- Communications support for the dept

Link KIT colleague: Ester Romeri

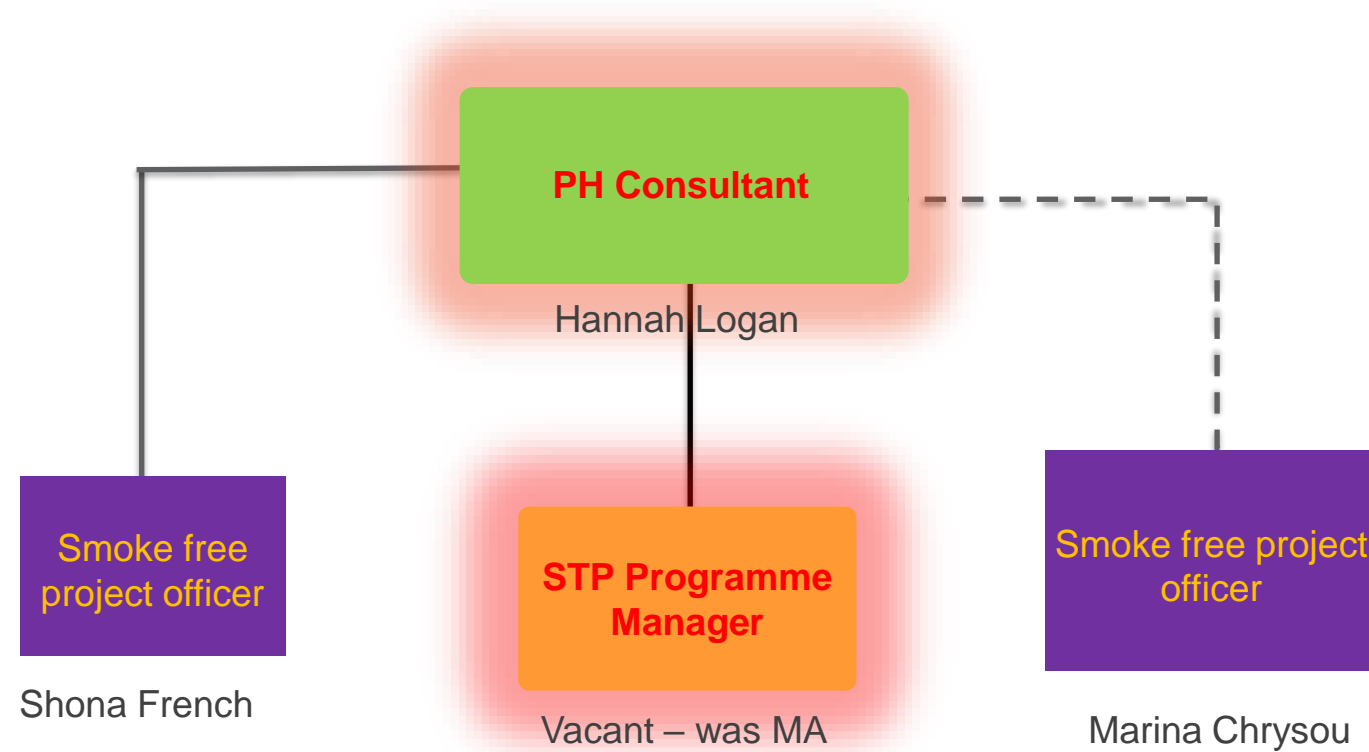
Wider determinants and mental health



- Housing/regen
- Employment
- Workplace health
- Transport
- Air quality
- Superzones
- Social prescribing
- Mental health and suicide prevention
- MECC and MHFA
- Community champions
- Links to Parks & Greenspaces

Link KIT colleague: David Clifford

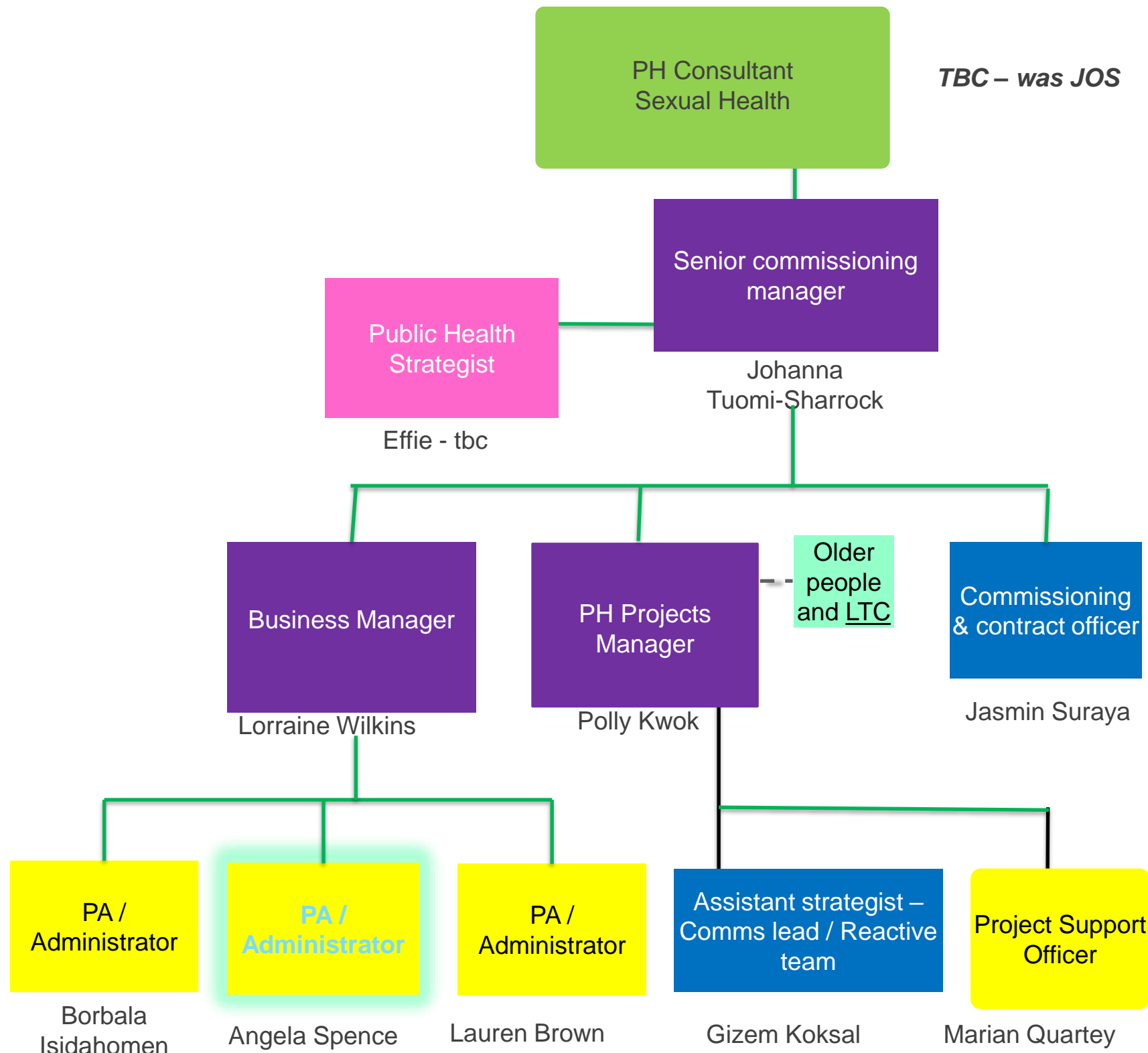
STP - prevention workstream



- Working with partners to deliver NCL STP workstream priorities:
 - Smoking
 - Obesity
 - Alcohol

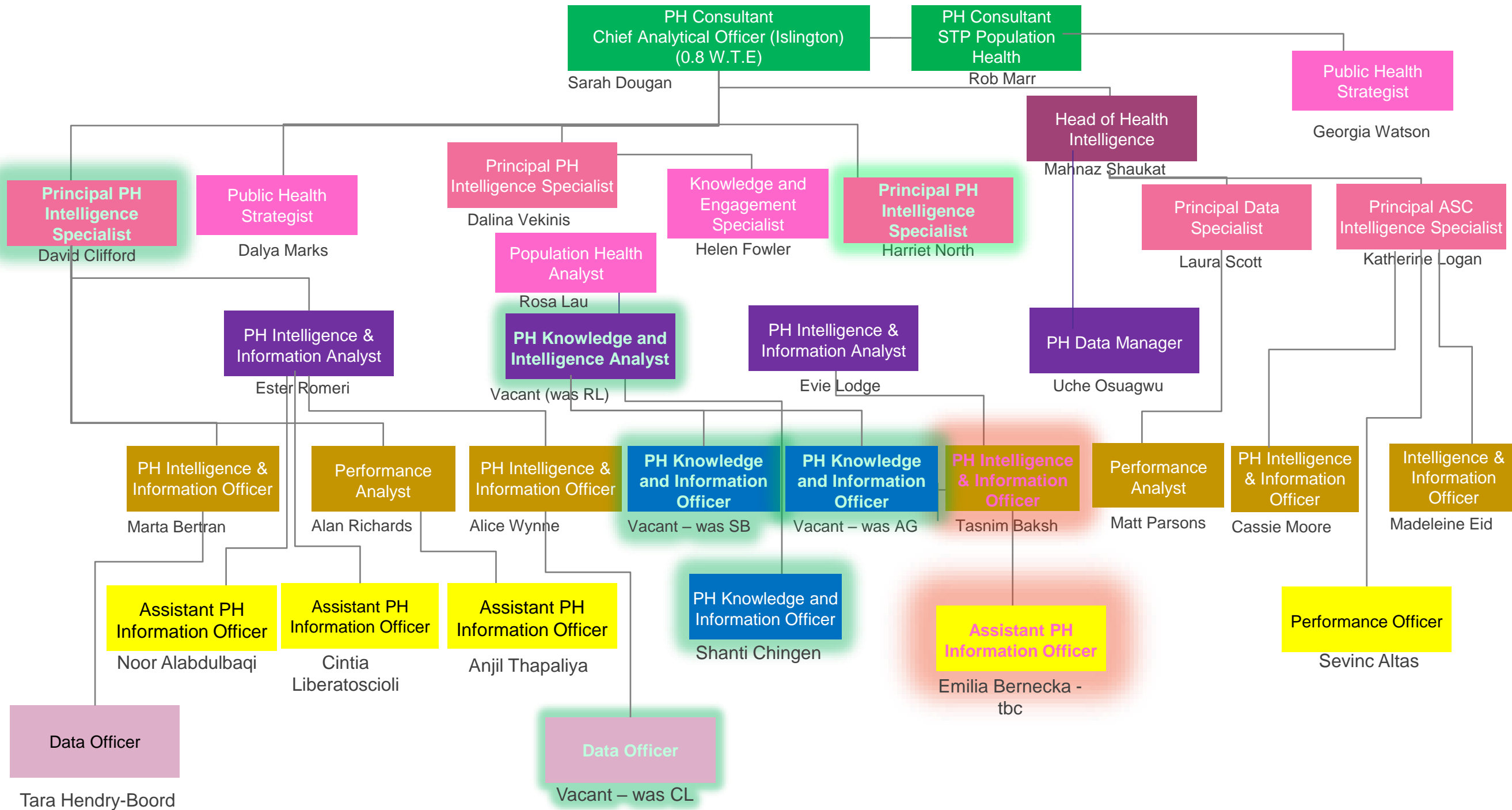
Link KIT colleague: Harriet North

Commissioning, governance and business administration



- Governance (inc. risk register, contract management, PGDs, LCS, performance mgmt., data protection, FOIs)
- Contracts (inc. health checks and LCS)
- Commissioning and procurement advice to other portfolios
- Dept finance oversight
- Finance management advice to other portfolios
- Dept admin and business support

Knowledge and intelligence team (1)



Knowledge and intelligence team (2)

- JSNA
- Provision of Public Health data analytics across the department
- Camden and Islington CCG core offer
- Islington UDB programme
- Islington adult social care intelligence
- Islington housing intelligence
- NCL population health management
- Haringey commissioned analytics
- Qualitative research and insight across the system
- Resident and service-user engagement and co-production
- Mixed-methods evaluation



Strategic PH Consultant

Houda Al-Sharifi



Director of Public Health (Islington)

Jonathan O'Sullivan



Director of Public Health (Camden)

Piers Simey



Chief Analytical Officer

Sarah Dougan



Assistant Director of PH

Vacant – was LWE



Assistant Director of PH

Aparna Keegan



Assistant Director of PH

Helen Asquith



Assistant Director of PH

Sue Hogarth



Assistant Director of PH

Charlotte Ashton



PH Consultant - STP

Rob Marr



PH Consultant - STP

Hannah Logan



PH Senior Strategist

Baljinder Heer-Matiana



Head of Health Intelligence

Mahnaz Shaukat



Senior Commissioning Manager

Emma Stubbs



PH Senior Strategist

Jane Brett-Jones





Data Manager

Uche Osuagwu



Principal PH Intelligence Specialist

Dalina Vekinis



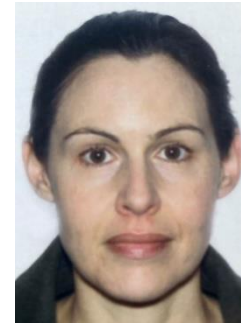
Principal PH Intelligence Specialist

Harriet North



Principal PH Intelligence Specialist

David Clifford



PH Population Health Analyst

Helen Fowler



PH Strategist - Reactive

Huw MacDonald



PH Strategist - Reactive

Damilola - tbc



Smoke Free Project Officer

Shona French

PH Knowledge & Information analyst

Vacant – was RL



Knowledge & Engagement Specialist

Rosa Lau



PH Intelligence & Information Analyst

Ester Romeri



PH Intelligence & Information Analyst

Evie Lodge

STP Programme Manager

Vacant – was MA



PH Intelligence & Information Officer - HARINGEY

Tasnim Baksh



PH Intelligence & Information Officer

Alice Wynne



PH Knowledge & Information Officer

Shanti Chingen

PH Knowledge & Information Officer

Vacant – was SB

Assistant PH Intelligence & Information Officer - HARINGEY

Vacant – was CM



Intelligence & Information Officer

Marta Bertran



Principal Data Specialist

Laura Scott



Public Health Strategist

Ian Sandford



Public Health Strategist

Danielle Lawrence



Public Health Strategist

Nina Job



Public Health Strategist

Tanvi Barreto



Public Health Strategist

Esther Dickie



Substance Misuse Commissioner

Lisa Luhman



Public Health Strategist

Julie Edgecombe



Joint Commissioning Officer

Claire Mulligan-Ward



Joint Commissioning Officer

Natalie Blenman

Joint Commissioning Officer

Anita de Pan

Public Health Strategist

Vacant – was LT



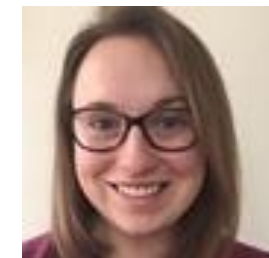
Public Health Project Manager

Effie Argyropoulou – (LS mat leave cover)



Public Health Project Officer

Gill Hannan

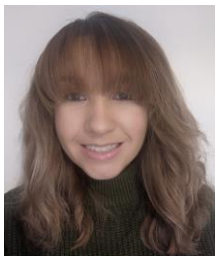


Public Health Strategist

Meinir Jones

Public Health Strategist

Georgia Watson



Assistant Strategist

Rachel Isted (RC secondment)



Strategist – Comms/ Reactive

Gizem Koksal



Assistant Strategist

Hannah Jones (EA cover)

Public Health Project Officer

Vacant – was NJ

Assistant Strategist

Vacant – was HM



Assistant Strategist

Olivia Hobden



Assistant Strategist

Astrid Grindlay (SK mat leave)



Public Health Strategy Improvement Officer

Katie Patrick

ASC Performance Team



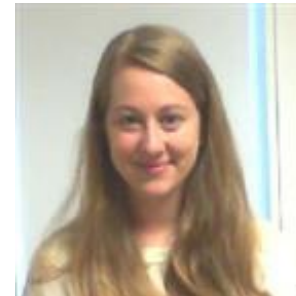
Performance Analyst

Madeleine Eid



Information / Intelligence Officer

Cassie Moore



Principal ASC Intelligence Specialist

Katie Logan



Performance Analyst

Matt Parsons



Performance Analyst

Alan Richards



Assistant Information/Intelligence Officer

Cintia Liberatoscioli



Assistant Information/Intelligence Officer

Anjil Thapaliya



Performance Officer

Sevinç Altas



Assistant PH Information Officer

Noor Alabdulbaqi

Apprentice Data Officer

Mahmood Abdul

Commissioning & Contract Officer

Jasmin Suraya

Smoke Free Project Officer

Marina Chrysou

PH Projects Officer

Polly Reynolds

PH Projects Manager

Dana Hayes

PH Projects Manager

Polly Kwok



Data Officer

Tara Hendry-Boord

Data Officer

Vacant – was CL



Project Support Officer

Marian Quartey



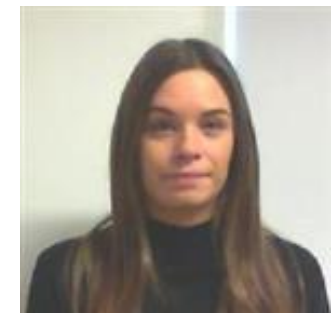
PA / Administrator

Borbala Isidahomen



PA / Administrator

Angela Spence



EA / Administrator

Lauren Brown



Public Health Registrar

Lena Al-Shammari



Public Health Registrar

Katherine Korner

Public Health Registrar

Vacant



GP Trainee

Joanna Dobbin



GP Trainee

Gemma Slater



Business Manager

Lorraine Wilkins