

PH Consultant
Chief Analytical Officer

Strategic Public Health Consultant



Working in partnership

Houda Al-Sharifi

Sarah Dougan

Directors of Public Health

Jonathan O'Sullivan (Islington)

Piers Simey (Camden)

PH Consultant
Sexual Health

PH Consultant
Healthy Ageing
Core offer

PH Consultant
Substance
Misuse/Healthy
Behaviours

PH Consultant
Weight
Management

PH Consultant
Healthy Ageing
Core offer

PH Consultant
Mental Health
Wider
Determinants

PH Consultant
Children and
Young People

**TBC –
was JOS**

Helen Asquith

Charlotte Ashton

**TBC –
was PS**

Aparna Keegan

Sue Hogarth

**Vacant –
was LWE**

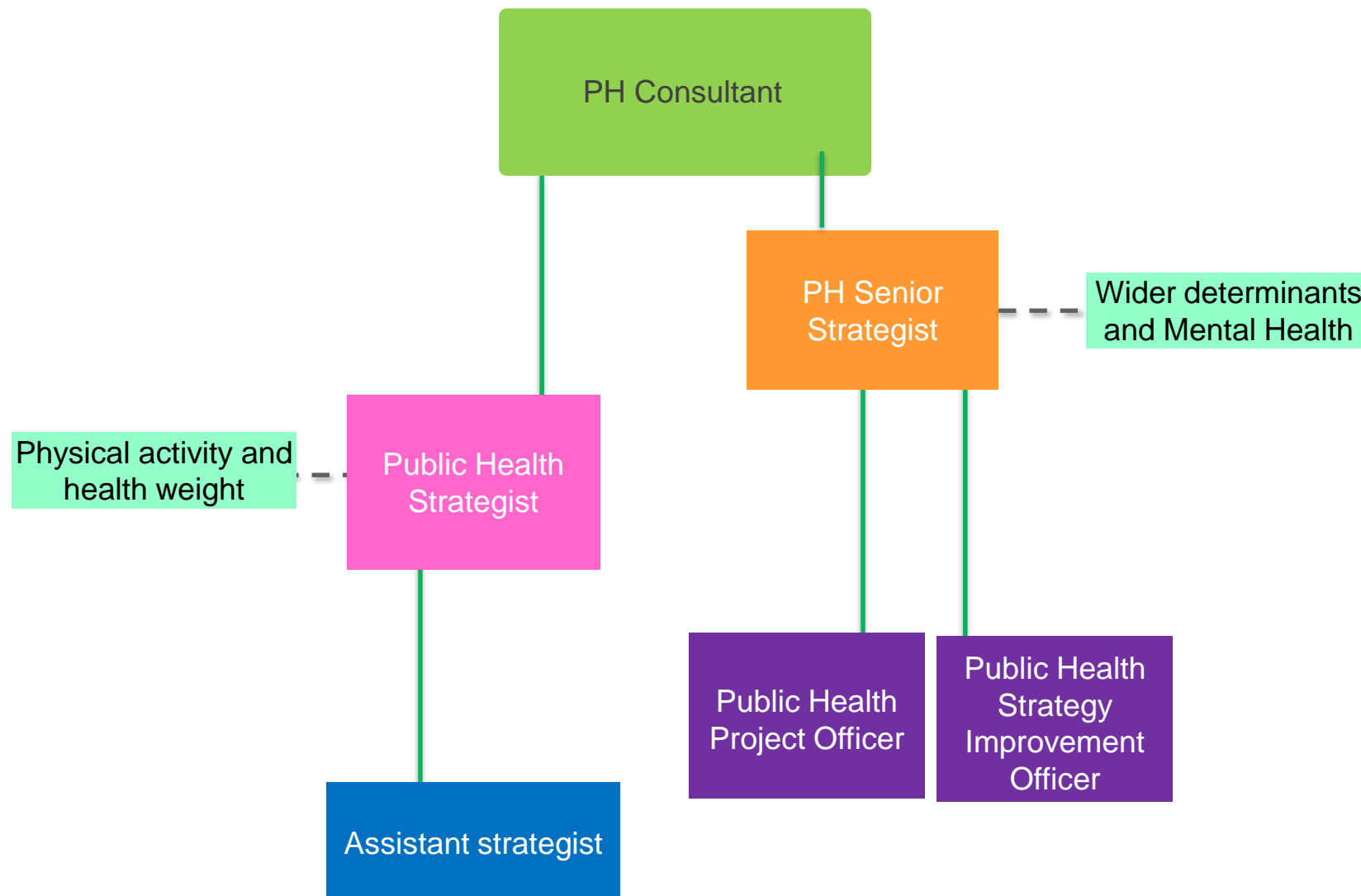
**PH Consultant – STP /
Data**

Rob Marr

PH Consultant - STP

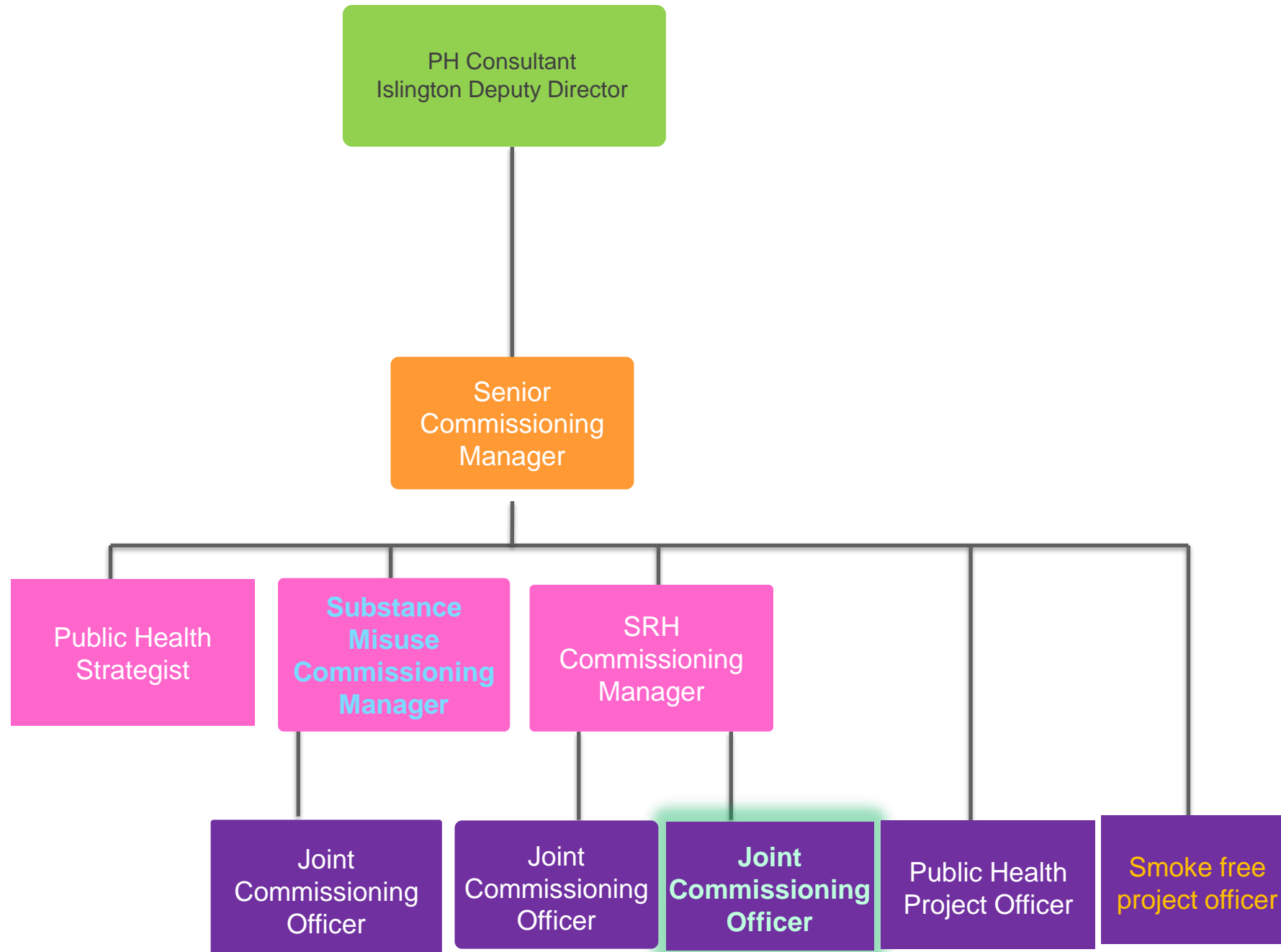
Hannah Logan

Children and young people



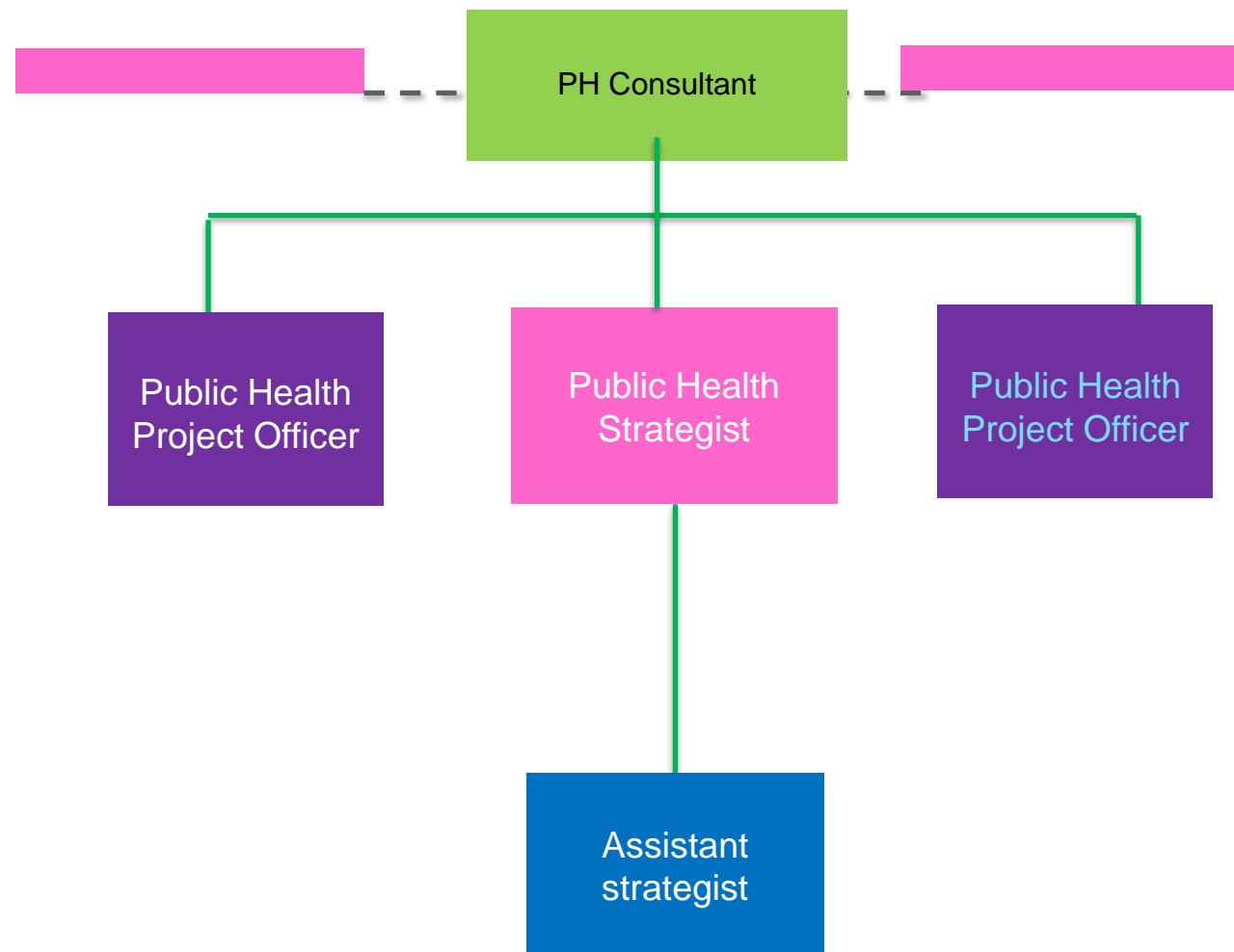
- Maternity
- Early years
- School age
- CYP mental health
- Immunisations
- Oral health
- Childhood obesity services
- Child Death Overview Panel
- Core offer
- Youth violence

Healthy Behaviours - adults



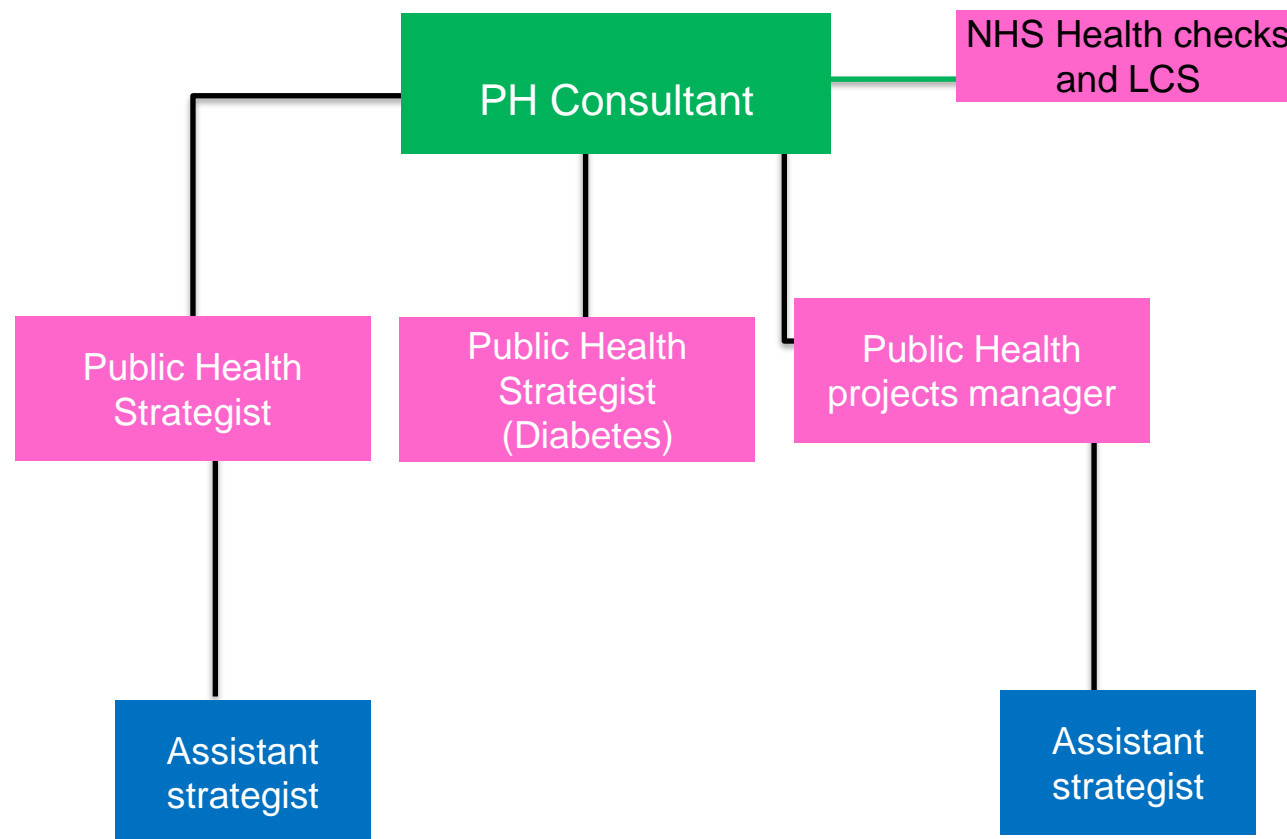
- Substance misuse (inc licensing) (all age groups)
- Sexual health (all age groups)
- Teenage pregnancy
- Domestic violence
- Homelessness, and adults with complex needs
- Smoking

Physical activity and healthy weight



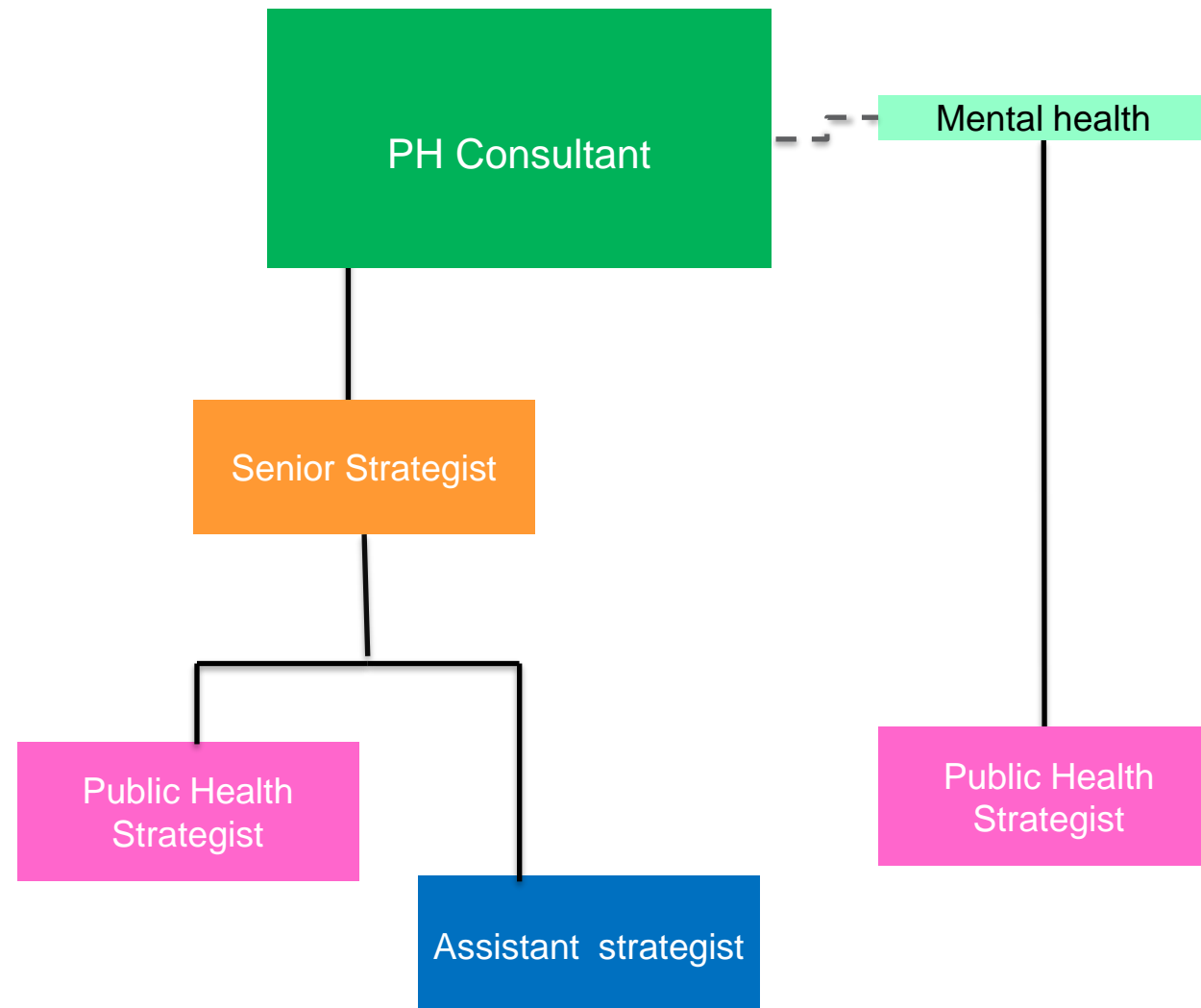
- Physical activity
- Healthy weight (including commissioned interventions/services for adults) – *to be covered by CGBS (slide 11) while this team formed*
- Camden CAN
- Somers Town Project
- Parks & green spaces
- Future Parks Accelerator
- Food policy and environment
- Food poverty
- Links to Superzones

Older adults, LTC and communications



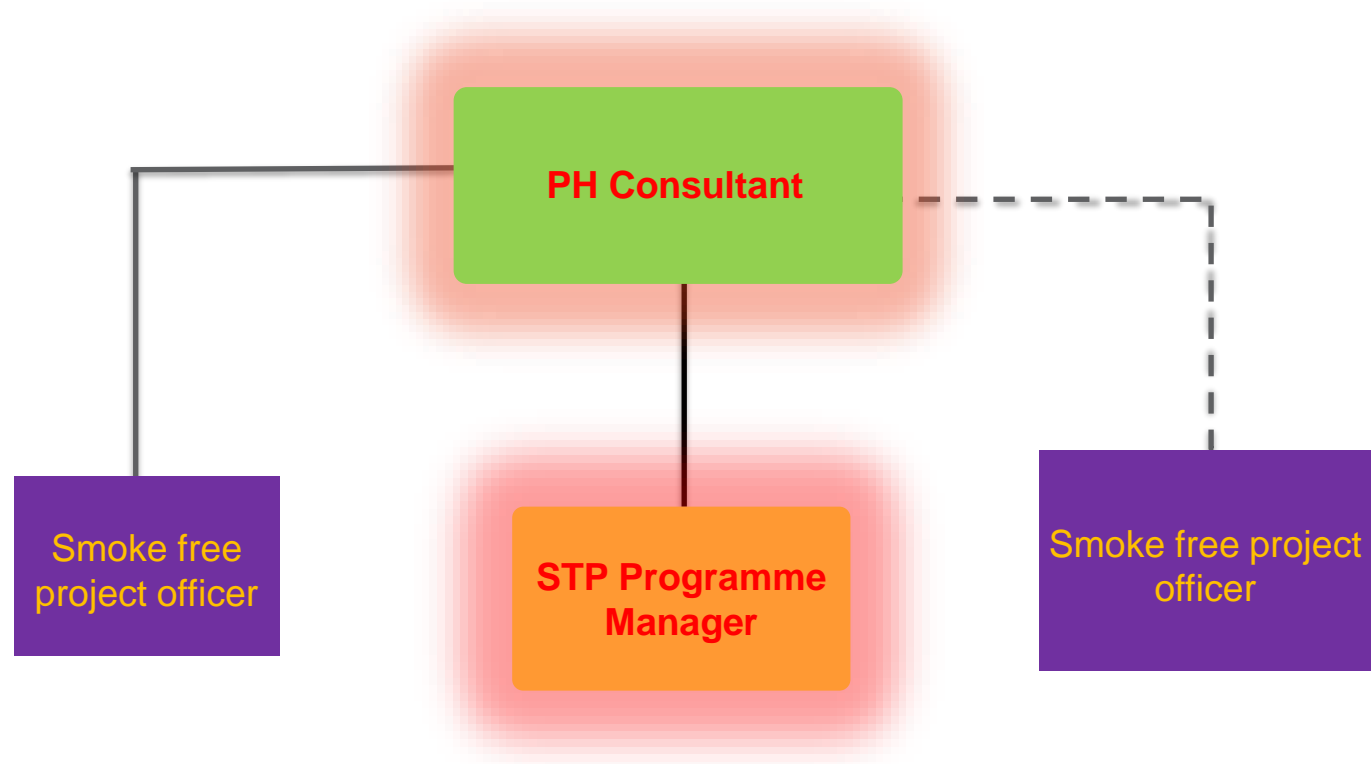
- Healthcare public health, Core offer to CCGs
- LTC (diabetes, cancer, CVD)/STP and local level
- Frailty
- Dementia
- Health protection
- Older adults wellbeing (inc falls and frailty)
- Link with ASC in Camden/Islington
- Camden neighbourhood development
- Better care fund
- Local care delivery board
- Strategic input into NHS health checks & relevant LCS
- Communications support for the dept

Wider determinants and mental health



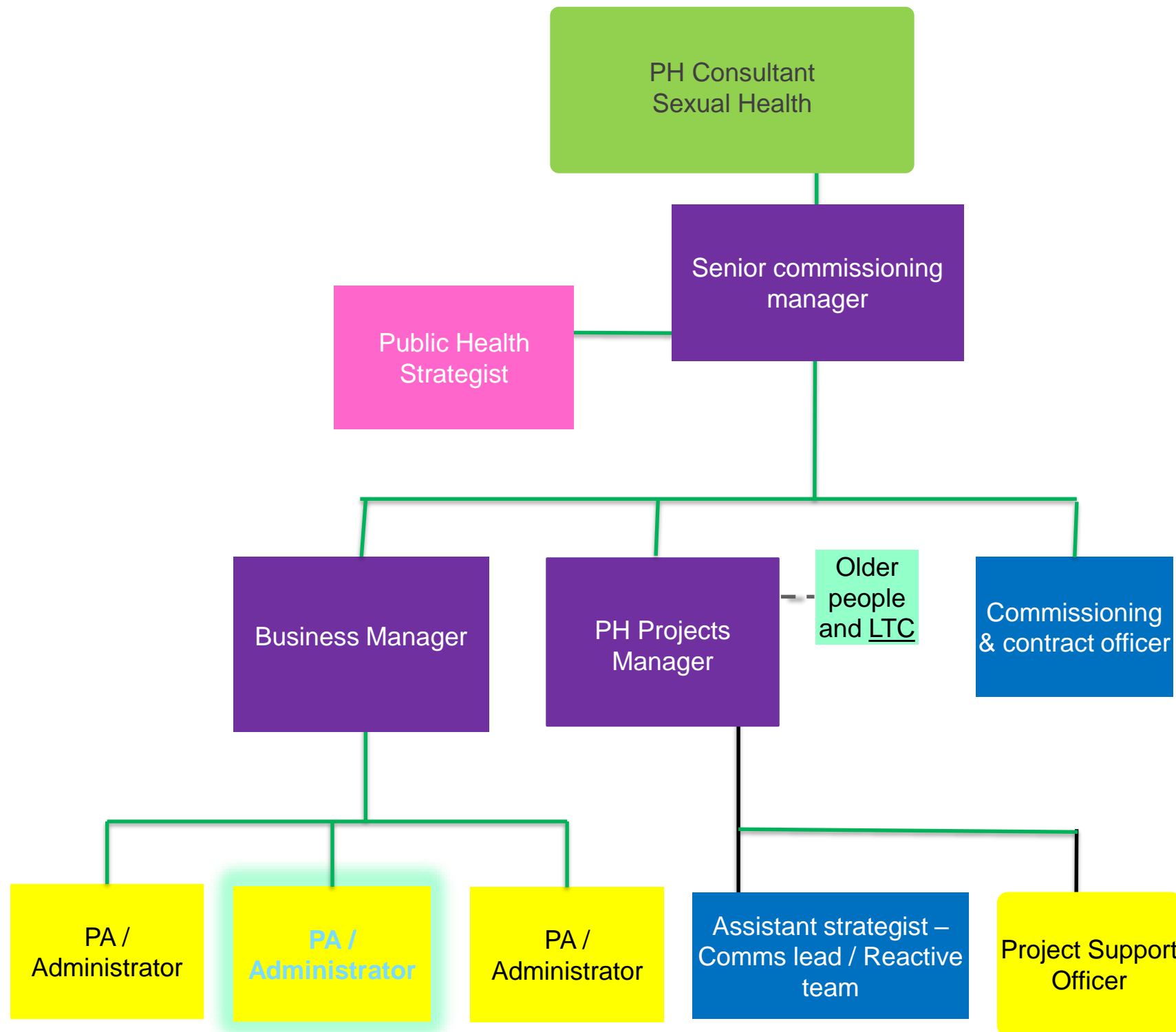
- Housing/regen
- Employment
- Workplace health
- Transport
- Air quality
- Superzones
- Social prescribing
- Mental health and suicide prevention
- MECC and MHFA
- Community champions
- Links to Parks & Greenspaces

STP - prevention workstream



- Working with partners to deliver NCL STP workstream priorities:
 - Smoking
 - Obesity
 - Alcohol

Commissioning, governance and business administration



- Governance (inc. risk register, contract management, PGDs, LCS, performance mgmt., data protection, FOIs)
- Contracts (inc. health checks and LCS)
- Commissioning and procurement advice to other portfolios
- Dept finance oversight
- Finance management advice to other portfolios
- Dept admin and business support

Knowledge and intelligence team (1)

